

Information Outlets

Category 6 Outlets

UNJ600 Category 6 Outlets deliver optimum performance to the work area. Proprietary design delivers excellent crosstalk (both NEXT and PSNEXT) margins with superior reliability. Jack and outlet contacts are gold/nickel-plated copper alloy for outstanding signal transmission. Insulation displacement connectors are solder/nickel-plated copper.

UNJ600 Category 6 outlets meet applicable safety standards and are available in 11 colors. UNJ600 outlets are required for Category 6 performance and are also compatible with standard RJ45 plugs.

- Multi-colored identification labels assure fast, accurate installation.
- Universal terminations for T568A/B wiring schemes.
- Low-profile wire cap protects against contamination and provides secure connections.
- Can be mounted either at 90 degrees (straight) or at 45 degree (angled). Angled feature eliminates the need for special faceplates or outlets.
- Wide channel for enhanced conductor placement and termination.
- Snap-on icons provided in strips of three: DATA, VOICE and BLANK, and are also sold separately in bulk packs of 25.
- D-Impact Tool or wire cap can be used to terminate the wire conductor.

Applications:

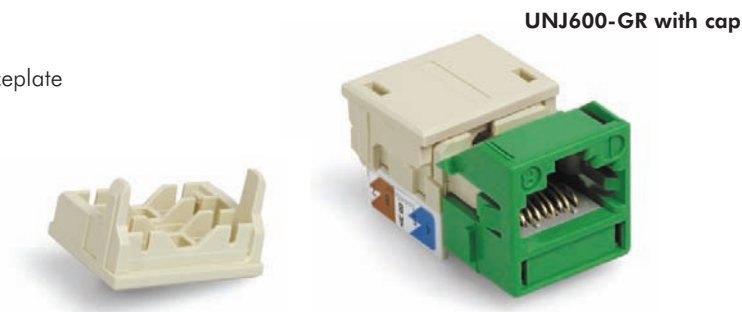
- Work areas

Meets/exceeds:

- Category 6/Class E requirements of ISO/IEC 11801, CENELEC EN50173-1 AND TIA/EIA 568B.2-1
- UL® Listed

Features:

- Caps can be used as a tool to remove the outlet from the faceplate



Specifications

Physical Specifications	
Width:	0.787 in (2 cm)
Length:	0.787 in (2 cm)
Depth:	1.22 in (3.1 cm)
Plastic:	High-impact, flame retardant, UL-rated 94 V-0 thermoplastic
Insertion Life:	> 750 insertions of an IEC 8 position plug
Min. Contact Force:	100 g using FCC-approved modular plug
Min. Plug Retention Force:	133 N
Operating Temperature Range:	14 to 140 °F (-10 to 60 °C)

Electrical Specifications	
EIA/TIA Category:	6
Min. Insulation Resistance:	500M Ω
Min. Dielectric Withstand Voltage (Contact to contact @ 60 Hz):	1000 VAC RMS
Min. Dielectric Withstand Voltage (To exposed conductive surface @ 60 Hz):	1500 VAC RMS
Max. Contact Resistance:	20 m Ω
Current Rating @ 20°C:	1.5 A

Information Outlets

Category 6 Outlets

Category 6 Information Outlets

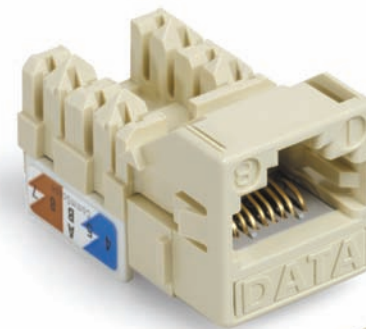
Product	Packaging	Color
UNJ600-BL	1/Pkg	Blue
UNJ600-OR	1/Pkg	Orange
UNJ600-GR	1/Pkg	Green
UNJ600-GY	1/Pkg	Gray
UNJ600-WH	1/Pkg	White
UNJ600-RD	1/Pkg	Red
UNJ600-BK	1/Pkg	Black
UNJ600-YL	1/Pkg	Yellow
UNJ600-IV	1/Pkg	Ivory
UNJ600-VL	1/Pkg	Violet
UNJ600-CM	1/Pkg	Cream

Bulk

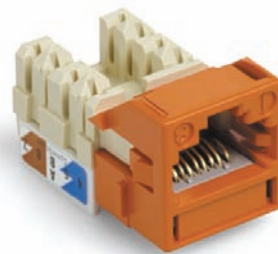
UNJ600-BL-100PK	100/Pkg	Blue
UNJ600-OR-100PK	100/Pkg	Orange
UNJ600-GR-100PK	100/Pkg	Green
UNJ600-GY-100PK	100/Pkg	Gray
UNJ600-WH-100PK	100/Pkg	White
UNJ600-RD-100PK	100/Pkg	Red
UNJ600-BK-100PK	100/Pkg	Black
UNJ600-YL-100PK	100/Pkg	Yellow
UNJ600-IV-100PK	100/Pkg	Ivory
UNJ600-VL-100PK	100/Pkg	Violet
UNJ600-CM-100PK	100/Pkg	Cream

Bulk Icons

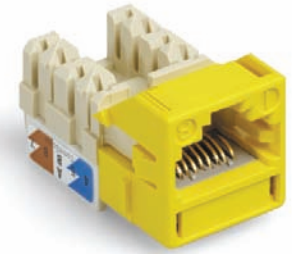
Product	Packaging	Color
UNJ-ICON-BL	25/Pkg	Blue
UNJ-ICON-OR	25/Pkg	Orange
UNJ-ICON-GR	25/Pkg	Green
UNJ-ICON-GY	25/Pkg	Gray
UNJ-ICON-WH	25/Pkg	White
UNJ-ICON-RD	25/Pkg	Red
UNJ-ICON-BK	25/Pkg	Black
UNJ-ICON-YL	25/Pkg	Yellow
UNJ-ICON-IV	25/Pkg	Ivory
UNJ-ICON-VL	25/Pkg	Violet
UNJ-ICON-CM	25/Pkg	Cream



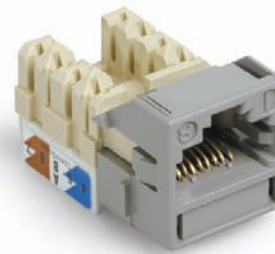
UNJ600-IV with icons



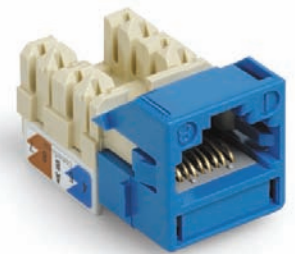
UNJ600-OR



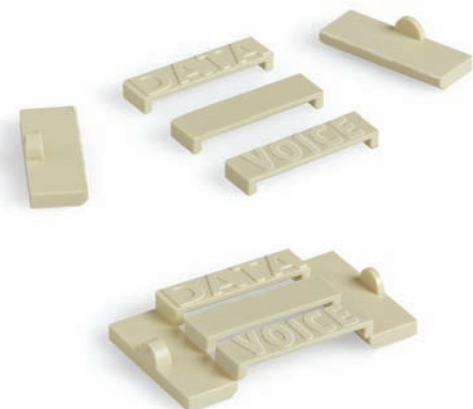
UNJ600-YL



UNJ600-GY



UNJ600-BL



Uniprise™
Category 6
Fiber
Coax
Multi-Conductor
Conduit
Packaging
Glossary/Index